

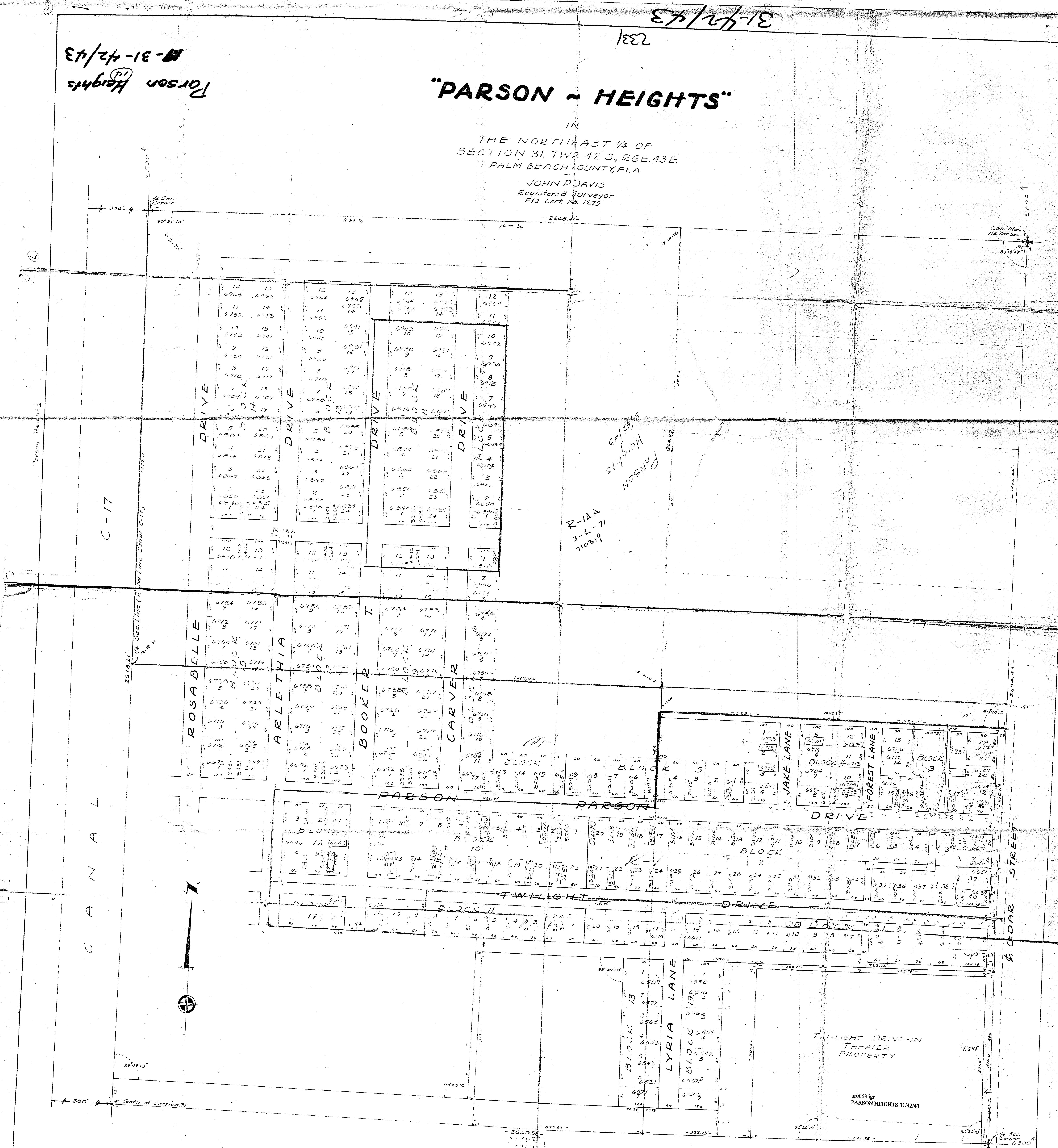
Parson Heights  
31-42/43

31-42/43  
732

# "PARSON HEIGHTS"

IN  
THE NORTHEAST 1/4 OF  
SECTION 31, TWP. 42 S., R6E. 43E.  
PALM BEACH COUNTY, FLA.

JOHN DAVIS  
Registered Surveyor  
Fla. Cert. No. 1275



I HEREBY CERTIFY that the plat shown hereon is a true and correct representation of a survey of the property described in the caption hereof, made under my direction, and is correct to the best of my knowledge and belief, and there are no encroachments, unless shown.

John P. Davis  
Registered Land Surveyor  
Florida Certificate No. 1275